



DOORGUARD

Datasheet

THE MOST INTELLIGENT TAILGATING AND OCCUPANCY SENSING SOLUTION

Orion's DoorGuard™ sets the bar by harnessing LiDAR technology and point-cloud data in combination with Orion's proprietary DoorGuard™ Inference Engine, to reduce false positives and provide the most technologically advanced* tailgating and occupancy sensing solution on the market today.

**Provides actionable data through [Orion's Infinity™ software platform](#) for accurate people counting, mustering info, operational efficiencies, business intel and more!*



KEY FEATURES

Smart Design: The only overhead (greater field of view) solution on the market!

Easy to Install: Easier to install than competing technology (*see mounting specs*)

Support: Backed by Orion's stringent quality control process and [support system](#).

Compatibility: Works seamlessly with existing access control systems.

Monitor from Anywhere: Connects to [Orion's Infinity™ software](#), which allows complete remote monitoring, trouble shooting, interaction and management.

Sales: 603.527.4187 • Customer Service: 603.527.4188 • sales@orioneci.com • orioneci.com
76A Lexington Drive, Laconia, NH 03246

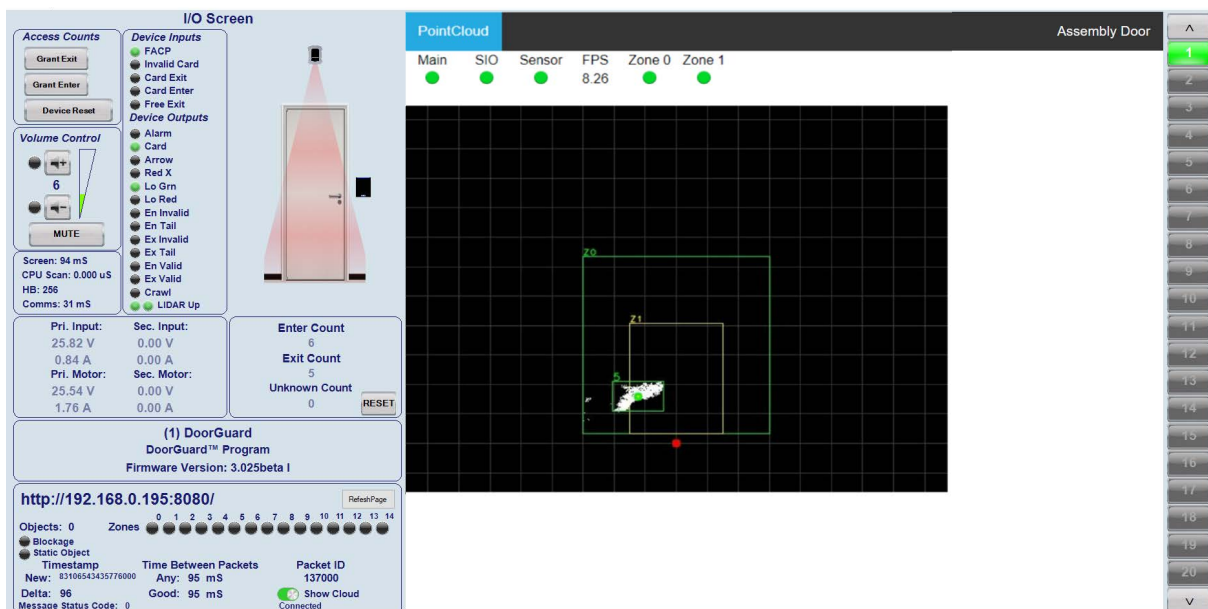
© 2022 Orion Entrance Control, Inc. All rights reserved. • r091622



HOW IT WORKS

- DoorGuard™ is powered by **LiDAR (Light Detection and Ranging) technology** to detect and ensure that every single individual passing the entry point has presented an authorized badge. If one credential is presented or scanned and more than one person enters, DoorGuard™ can alert security of a tailgate using our Infinity software, or through our open API, or relay outputs.
- The powerful **DoorGuard™ Inference Engine** is what helps to further differentiate this technology from the competition, as it can be taught over time using intentional training. DoorGuard can adapt to your specific needs, unlike anything on the market!
- DoorGuard™ is universally compatible with any existing access control system and fully integrates with **Orion's Infinity™ software platform**. Infinity allows users to quickly address and respond to issues in real-time, on site, or remotely, saving valuable time and resources troubleshooting, all while providing actionable data on who is in the building at all times! Know who and where people are for effective and frictionless building control.

Shown Below: On the right, Infinity software Pointcloud identifies a person from above within the zones of interest. This is one of the many screens for DoorGuard, which displays inputs, outputs, power draw/consumption, the point cloud visual, and remote access control, for example. **Please click [here](#) for the demo video.**



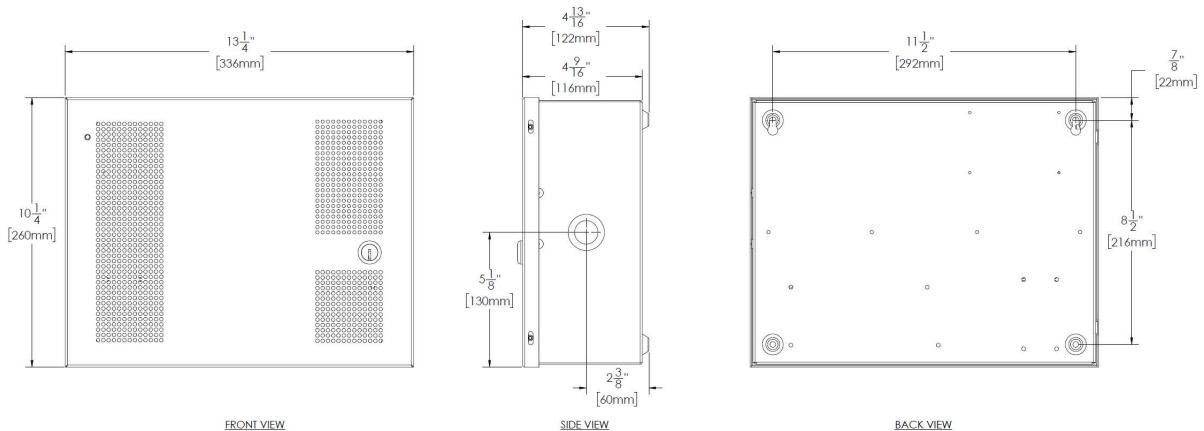


DOORGUARD

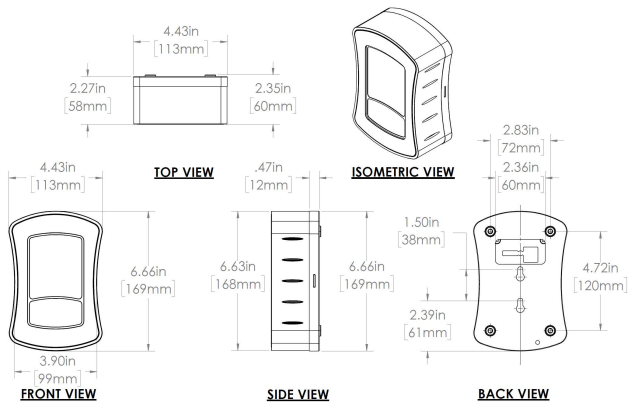
PRODUCT SPECIFICATIONS

Input Voltage:	24 Volts	Dimensions:	Packaging: 17" x 15" x 13"
Power Draw:	35 Watts Nominal / 70 Watts Peak		Control Box: 13.25" x 10.25" x 4.80"
Current Draw:	1.45A		Sensor: 6.66" x 4.43" x 2.35"
Power Consumption:	.035 kWh	Weight:	Package: 13 lbs. (5.90Kg)
Communication Type:	Cat5e or Greater		Control Box: 8.50 lbs. (3.86Kg)
Max Comms Cable Distance:	328' Ethernet Restriction		Sensor: 1.65 lbs. (.74Kg)
Max Power Cable Distance:	Control Box: 100' @ 14AWG from PS	Operating Wavelength:	850 nm
	Sensor: 1000' @ 18AWG from CB	Ambient Light Range:	0 - 130,000 Lux
Operating Temperature:	Control Box: (-40C - 75C) (-40F - 167F)	Field of View	H125 x V93
	Sensor: (-20C - 60C) (-4F - 140F)		

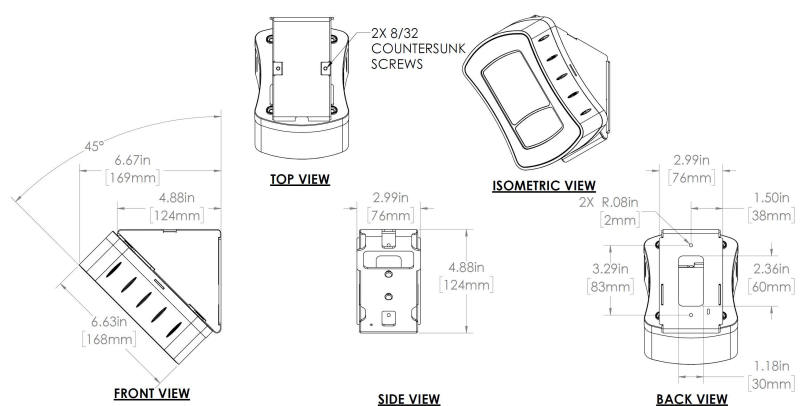
Control Box



Sensor



Sensor on Mount



Sales: 603.527.4187 • Customer Service: 603.527.4188 • sales@orioneci.com • orioneci.com

76A Lexington Drive, Laconia, NH 03246

© 2022 Orion Entrance Control, Inc. All rights reserved. • r091622