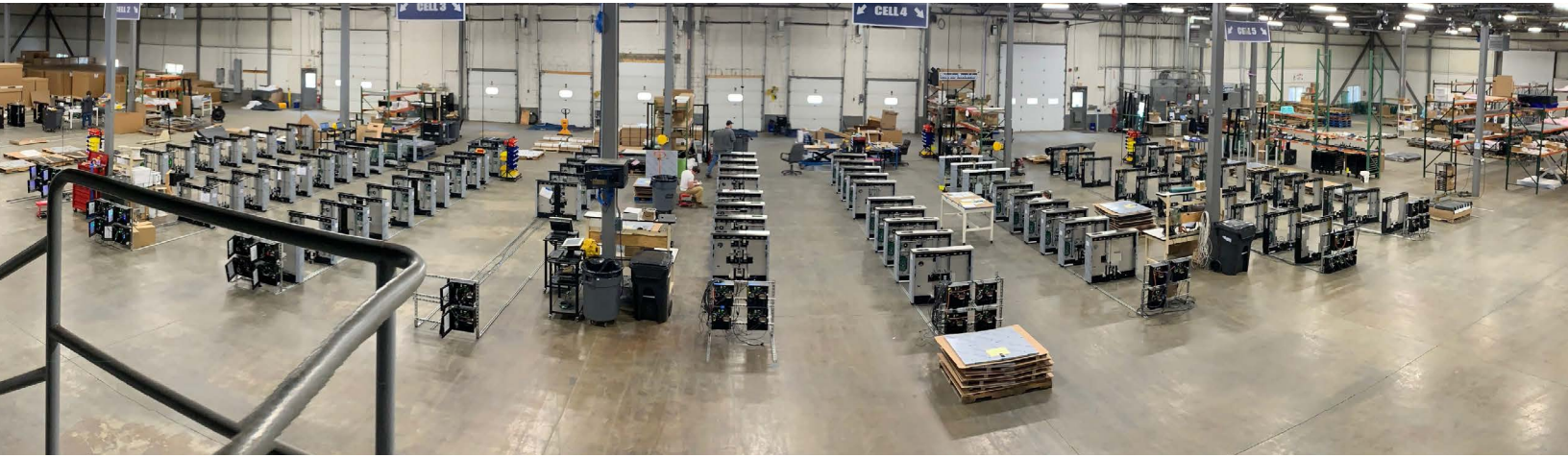




Orion Entrance Control 2023

603.527.4187 · sales@orioneci.com · orioneci.com



Proudly developing technologies that deliver to your wants and needs for the best possible impact to your business. At Orion, everyone seeks to provide an exceptional customer experience.



IRLC-SW

[Learn more here](#)
[infinity-software and Software and Hardware Requirements](#)

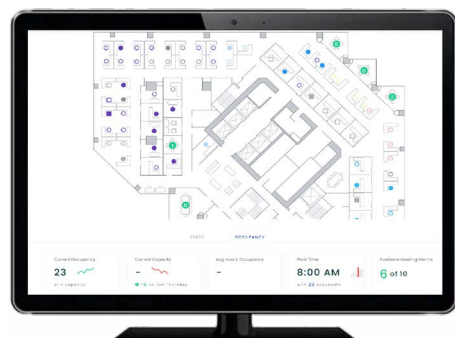
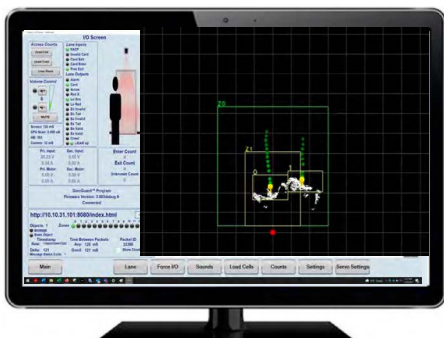
Orion developed this powerful tool to visually provide users with key data and metrics, and contains a built in RESTful API for external communications with other applications and so much more...

- Data / Metrics
- Remote Lane Control
- Integration Tool
- Diagnostic Tool
- Scheduling Tool

Infinity provides unmatched flexibility and capability across our entire suite of entrance solutions.



Custom Screens can be developed to meet our customers unique requirements





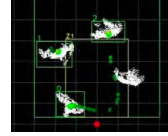
Orion Entrance Control 2023



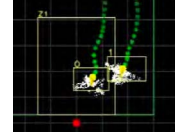
 DOORGUARD

[Learn more here](#)
[doorguard](#)

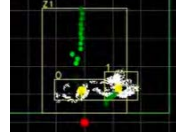
Multiple Users



Shoulder to Shoulder



Bi-Directional

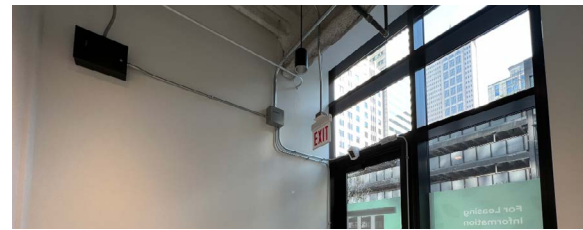


DoorGuard is the world's most accurate and intelligent Tailgate Detection System.

Powered by the Nebula AI it can even learn patterns to increase its capability!

- * Solid-State LiDAR
- * Overhead Sensing Position
- * Multi-Directional Detection and Counting
- * US Patent #US 11,495,070 B2

Orion developed DoorGuard to recognize human behavior at entry locations and to eliminate false alarms. Integrates to any access control system via dry contact relays or Orion's Infinity RESTful API.



Nebula AI Control Box



Orion Power Supply is optional

LiDAR Sensor



DoorAlert - iDMA

Propped Doors Mean Unsecured Floors

Door Prop Alarms needed a next generation solution and DoorAlert™ is the innovative, flexible, IOT device solution clients have demanded. This intelligent local door alarm means security professionals now have equipment settings they can customize to avoid false alarms and the corresponding fatigue which plague existing product

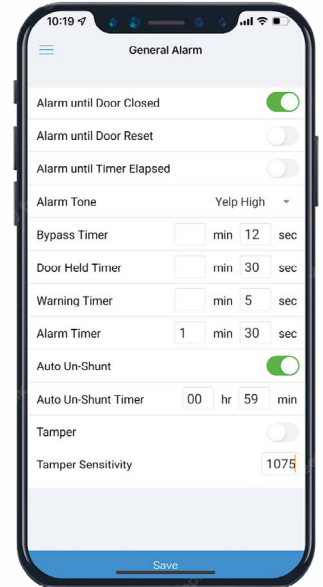
iButton Reader DA2101



iButton Speaker DA2103



Free Smartphone App



Simple Key Item DA2101



Core Key Item DA2104



Propped Doors Increase Costs
Energy Waste

Not only do propped doors impact security, they also impact facility costs through wasted energy.

Skyrocketing natural resource prices mean open doors create less efficient temperature control.



Orion Entrance Control 2023

Thinline

Model: TL



Pedestal Width: 4"
Lane Width: Standard 28"/ADA 36"
Pedestal Length w/Flat End and
w/Round End: 45"
Glass Height: 38.5" to 72"

Thinline-Compact

Model: TL-C



Pedestal Width: 4"
Lane Width: Standard 28"/ADA: 36"
Pedestal Length w/Flat End: 36"
Pedestal Length w/Round End: 39"
Glass Height: 38.5" to 72"

[Learn more here](#)

[thinline/swing-glass-speedgates/#tmsg](#)



Thinline Clear View

Model: TL-CV



Pedestal Width: 4"
Lane Width: Standard 28"/ADA 36"
Pedestal Length w/Flat Ends and
w/Round Ends: 55"
Glass Height: 38.5" to 72"

Thinline Clear View-Extended

Model: TL-CV-E



Pedestal Width: 4"
Lane Width: Standard 36"/ADA 36"
Pedestal Length w/Flat Ends and
w/Round Ends: 67"
Glass Height: 38.5" to 72"





Orion Entrance Control 2023

Optical Barrier Swing
Glass - Low Glass
Model: OBSG-LG



Pedestal Width: 7"
Lane Width: Standard 28"/ADA 36"
Pedestal Length w/Flat Ends: 42.5"
Pedestal Length w/Round Ends: 45"



[Learn more here](#)
[lowglass/swing-glass-speedgates/#lgsg](#)

Optical Barrier Swing Glass
Low Glass - Compact
Model: OBSG-LG-C



Pedestal Width: 7"
Lane Width: Standard 28"/ADA 36"
Pedestal Length w/Flat Ends: 36"



Optical Barrier Swing Glass
Low Glass-Clearview
Model: OBSG-LG-CV



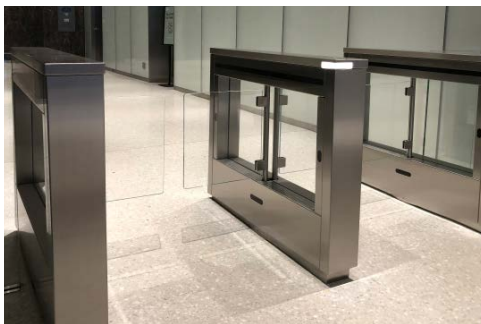
Pedestal Width: 7"
Lane Width: Standard 28"/ADA 36"
Pedestal Length w/Flat Ends: 48"
Pedestal Length w/Round Ends: 49"



Optical Barrier Swing Glass
Low Glass - Clear view - Extended
Model: OBSG-LG-CV-E



Pedestal Width: 7"
Lane Width: From 28" up to 48"
Pedestal Length w/Flat Ends: 60.75"
Pedestal Length w/Round Ends: 60.75"





Orion Entrance Control 2023

[Learn more here](#)
[highglass/swing-glass-speedgates/#hgsg](#)

Optical Barrier Swing
Glass - High Glass
Model: OBSG-HG



Pedestal Width: 7"
Lane Width: Standard 28"/ADA 36"
Pedestal Length w/Flat Ends: 42.5"
Pedestal Length w/Round Ends: 45"



Optical Barrier Swing Glass
High Glass-Extended
Model: OBSG-HG-E



Pedestal Width: 8"
Lane Width: From 48" up to 48"
Pedestal Length w/Flat Ends: 54"
Pedestal Length w/Round Ends: 58"



Optical Barrier Swing Glass
High Glass-Clearview
Model: OBSG-HG-CV



Pedestal Width: 7"
Lane Width: Standard 28"/ADA 36"
Pedestal Length w/Flat Ends: 48"
Pedestal Length w/Round Ends: 49"



*Only Bi-Parting Full Glass products require 120VAC. All other products operate using 24VDC via an external power supply connected to a 120V15A dedicated circuit. All products shown can have round or square ends. Lane width up to 36"





Orion Entrance Control 2023



Optical Bi-Parting
Full Glass-standard
Model: OBFG-ST

Pedestal Width: Standard 13"
Lane Width :Standard 22"
Pedestal Length w/Round Ends:
Standard 52"

Optical Bi-Parting
Full Glass ADA
Model: OBFG-ADA

Pedestal Width: ADA 21"
Lane Width: ADA 36"
Pedestal Length w/Round Ends:
ADA 52"

[Learn more here](#)
[retractable-barrier-speedgates](#)

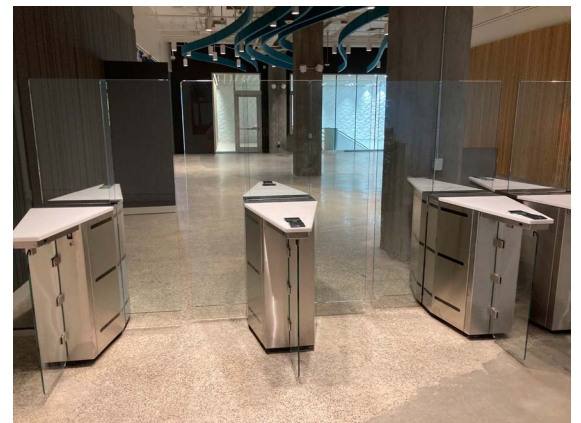


Optical Bi-Parting
Full Glass-Extended
Model: OBFG-E-ST

Pedestal Width: Standard 13"
Lane Width: Standard 22"
Pedestal Length w/Flat Ends:
Standard 74.5"

Optical Bi-Parting Full
Glass-Extended ADA
Model: OBFG-E-ADA

Pedestal Width: ADA 21"
Lane Width: ADA 36"
Pedestal Length w/Flat Ends:
ADA: 74.5"



All products shown can have round or square ends and are available in a wide variety of architectural finishes.





Orion Entrance Control 2023

Optical Drop Arm Barrier

Model: ODAB



Pedestal Width: Standard and ADA 6.5"
Lane Width: Standard 28"/ ADA 36"
Pedestal Length w/Flat Ends and w/
Round Ends: 36"

[Learn more here](#)
[arm-barrier-speedgates/#sasg](#)



Optical Swing Arm Barrier (Double Arm)

Model: OSAB-DA



Optical Swing Arm Barrier (Single Arm)

Model: OSAB-SA



Pedestal Width: Standard and ADA 7"
Lane Width: Standard 28"/ ADA 36"
Pedestal Length w/Flat Ends: 42.5"
Pedestal Length w/Round Ends: 45"



Pedestal Width: Standard and ADA 7"
Lane Width: Standard 28"/ ADA 36"
Pedestal Length w/Flat Ends: 42.5"
Pedestal Length w/Round Ends: 45"





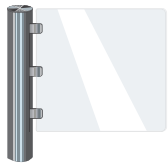
Orion Entrance Control 2023

Pure Optical No Barrier
Clear View Compact
Model: PONB-CV-C



[Learn more here](#)
[pure optical no barrier](#)

Pedestal Width: Standard and ADA
Lane Width: Standard 28" / ADA 36"
Pedestal Length w/Flat Ends and w/
Round Ends: 36"



Orion Pedestrian
Swing Gate
Model: OPSG

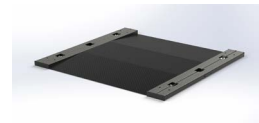
Pedestal Width: 6.25"
Passage Width: Standard 36"
Pedestal Height: 38"

[Learn more here](#)
[accessories](#)



Post and Glass-Standard
Model: OPAG-ST

Post and Glass-Highglass
Model: OPAG-HG



Orion Lane Mounting
Platform
Model: OLMP

*PRICE DEPENDS ON PEDESTAL TYPE

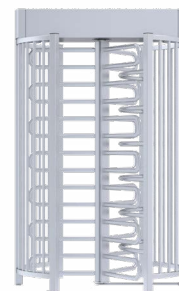
Orion's post and glass panels are used to secure areas or direct traffic in your entrance control configuration in areas where turnstiles are not needed. These permanent barriers are made of clear, tempered glass and are 3/8 inch thick.

The Orion Lane Mounting Platform allows for the installation of turnstiles without the need of cutting or drilling into existing floors.



Full Height Mechanical MR-T 672
Model: MR-T 672

Rotor: 3 sectional (120°) and 10 with acrylic/polycarbonate arms and side panels
Complete Height: Standard 93.31"
Complete Width: 95.59"



Full Height Mechanical-MR-T 673
Model: MR-T 673
Rotor: 3 sectional (120°) and 13 horizontal arms 2" diameter in each section
Complete Height: Standard 93.31"
Complete Width: 62.24"

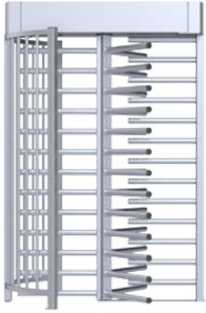
Hot Dipped Galvanized Steel
Powder Coated over Hot Dipped Galvanized Steel
AISI 304 Stainless Steel
AISI 316 Stainless Steel
AISI 304 Stainless Steel Rotor and Powder Coated over Hot Dipped Galvanized Steel Frame





Orion Entrance Control 2023

[Learn more here](#)
[full-height-mechanical](#)



Full Height Mechanical- MR-T 670

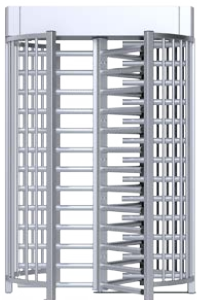
Model: MR-T 670

F-1001	Hot Dipped Galvanized Steel
F-1002	Powder Coated over Hot Dipped Galvanized Steel
F-1003	AISI 304 Stainless Steel
F-1004	AISI 316 Stainless Steel
F-1006	AISI 304 Stainless Steel Rotor and Powder Coated over Hot Dipped Galvanized Steel Frame

Rotor: 3 sectional (120°) and 13 horizontal arms 2" diameter in each section

Complete Height: Standard 93.31"

Complete Width: 62.28"



Full Height Mechanical- MR-T 671

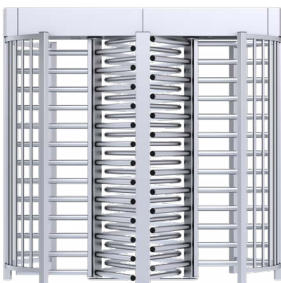
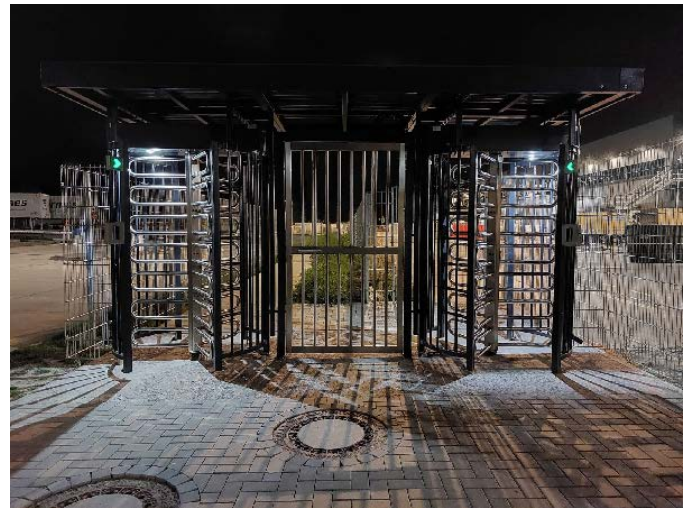
Model: MR-T 671

F-1043	Hot Dipped Galvanized Steel
F-1044	Powder Coated over Hot Dipped Galvanized Steel
F-1045	AISI 304 Stainless Steel
F-1046	AISI 316 Stainless Steel
F-1048	AISI 304 Stainless Steel Rotor and Powder Coated over Hot Dipped Galvanized Steel Frame

Rotor: 3 sectional (120°) and 13 horizontal arms 2" diameter in each section

Complete Height: Standard 93.31"

Complete Width: 62.28"



Full Height Tandem-MR-T 672

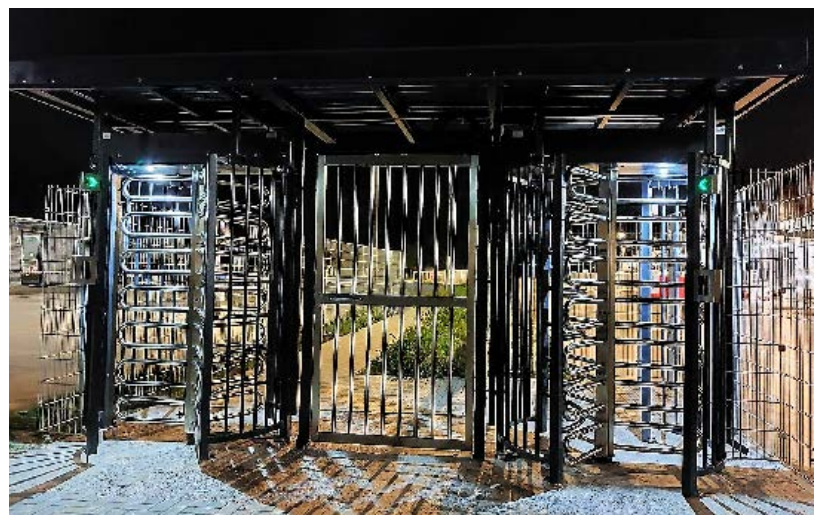
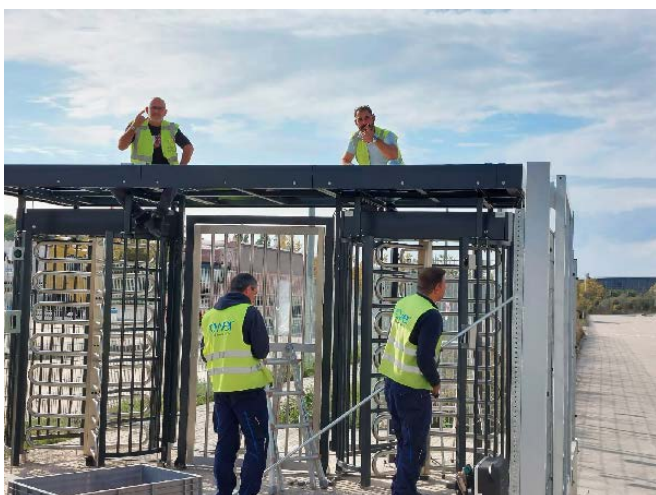
Model: MR-T 672

F-1085	Hot Dipped Galvanized Steel
F-1086	Powder Coated over Hot Dipped Galvanized Steel
F-1087	AISI 304 Stainless Steel
F-1088	AISI 316 Stainless Steel
F-1090	AISI 304 Stainless Steel Rotor and Powder Coated over Hot Dipped Galvanized Steel Frame

Rotor: 2 sectional (120°) and 13 horizontal arms 2" diameter in each section

Complete Height: Standard 93.31"

Complete Width: 95.59"





Full Height Automatic Bidirectional Gate-MS 102

Model: MS 102

F-1521	Hot Dipped Galvanized Steel
F-1522	Powder Coated over Hot Dipped Galvanized Steel
F-1523	AISI 304 Stainless Steel
F-1524	AISI 316 Stainless Steel
F-1526	AISI 304 Stainless Steel Rotor and Powder Coated over Hot Dipped Galvanized Steel Frame

[Learn more here full-height-mechanical](#)

Rotor: Motorized bi-directional rotor with 13 horizontal arms in a 2" diameter
Complete Height: 93.31"
Complete Width: 59.06"

Available as a double wide Full Height Automatic Bidirectional Gate-MS 182

Model: MS 182



F-1528	Hot Dipped Galvanized Steel
F-1529	Powder Coated over Hot Dipped Galvanized Steel
F-1530	AISI 304 Stainless Steel
F-1531	AISI 316 Stainless Steel
F-1533	AISI 304 Stainless Steel Rotor and Powder Coated over Hot Dipped Galvanized Steel Frame

Rotor: Bi-directional rotors with 13 horizontal arms in 2" diameter.
Complete Height: 93.31"
Complete Width: 92.2"



ADA Full Height Bidirectional Gate MD 100

Model: MD 100

Full height manual operated security gates can be installed and operated individually or in conjunction with full height turnstiles. Right or left handed swing directions can be chosen.

Complete Height: 93.31"
Complete Width: 47.8"

F-1535	Hot Dipped Galvanized Steel
F-1536	Powder Coated over Hot Dipped Galvanized Steel
F-1537	AISI 304 Stainless Steel
F-1538	AISI 316 Stainless Steel
F-1540	AISI 304 Stainless Steel Rotor and Powder Coated over Hot Dipped Galvanized Steel Frame
MD-100M	Pushbar exit device and closer, mesh infill
MD-100E	Pushbar exit device, closer and electrical strike



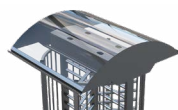
Full Height Canopy



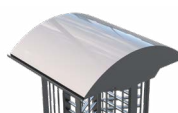
Full Height Roof with Water Outlet

Call for pricing
[603.527.4187](tel:603.527.4187)
or email us at
sales@orioneci.com

Options



- Aluminium frame
- Clear polycarbonate canopy top
- Aluminium canopy side panels



- Aluminium frame
- Opaque polycarbonate canopy top
- Aluminium canopy side panels



- Galvanised steel roof frame
- Galvanised steel trapezoidal sheet cover
- Powder coated aluminium roof edge panelling in RAL colors
- PVC or steel pipe for water outlet



Durapod DT 100-ST

Model: DT 100-ST

T-1001	Electromechanical Tripod Turnstile - AISI 304
T-1002	Electromechanical Tripod Turnstile - Drop Arm - AISI 304
T-1004	Motor-driven Tripod Turnstile - Drop Arm - AISI 304

Passage Width: 22"

Arm Length: 20"

Cabinet Size (WxLxH): 9.84"x 41.33"x 39.37"

If configured the arms drop down with power loss



Durapod DT 200-BG

Model: DT 200-BG

T-1022	Electromechanical Tripod Turnstile - AISI 304
T-1023	Electromechanical Tripod Turnstile - Drop Arm - AISI 304
T-1025	Motor-driven Tripod Turnstile - Drop Arm - AISI 304

Passage Width: 22"

Arm Length: 20"

Cabinet Size (WxLxH): 9.84"x 47.24"x 39.84"

If configured the arms drop down with power loss



Durapod DT 500

Model: DT 500

T-1050	Electromechanical Tripod Turnstile - AISI 304
T-1051	Electromechanical Tripod Turnstile - Drop Arm - AISI 304
T-1053	Motor-driven Tripod Turnstile - Drop Arm - AISI 304

Passage Width: 22"

Arm Length: 20"

Cabinet Size (WxLxH): 11.81"x17.71"x40.55"

If configured the arms drop down with power loss



Mechanical Swing Gate SGM 100

Model: SGM 100

WS 1 GT-5010-000	Mono directional manual mechanical swing gate without lock.
WS 2 GT-5011-000	Bi-directional manual mechanical swing gate without lock.
WL 1 GT-5012-000	Mono directional manual mechanical swing gate with keylock.
WL 2 GT-5013-000	Bi-directional manual mechanical swing gate with keylock.
WE 1 GT-5014-000	Mono directional manual mechanical swing gate with electric lock.
WE 2 GT-5015-000	Bi-directional manual mechanical swing gate with electric lock.

Passage Width: max 36"

Barrier Wing Length: max 35.43"

Post Height: 39"

Post Diameter: 4"