



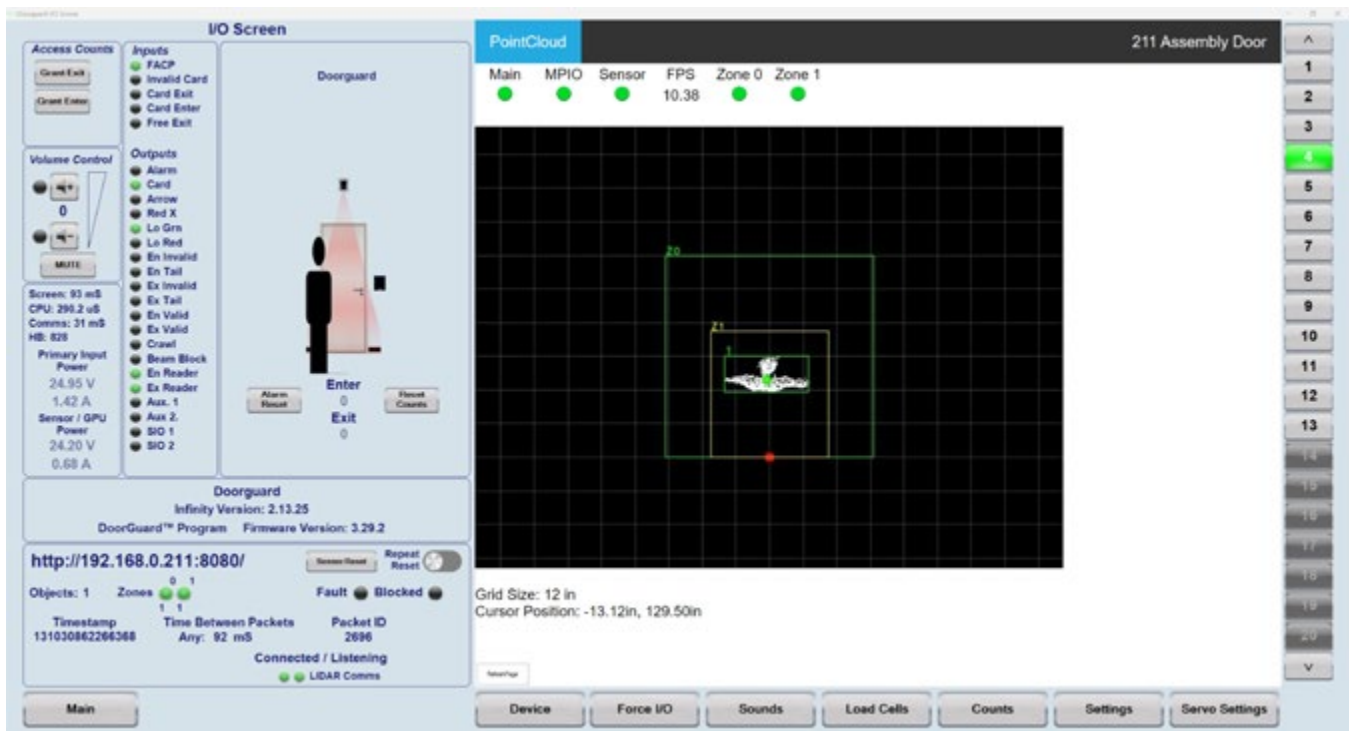
How it Works

- DoorGuard™ is the realization of Lidar sensor technology, video processing power and software development to create the first overhead mounted product that detect tailgating. Powered by the powerful Nebula AI™ engine, DoorGuard™ not only sees people but can also be taught variations to allow authorized entry.
- DoorGuard™ communicates with access control systems via traditional 6 programmable inputs and 14 outputs or via the Infinity™ software RESTful API.
- The flexible installation and configurable programming is further supported by the legendary Orion Technical Support. It is easy to install, program and implement yet retains a growth path for future capability and growth as a security tool.

If true access control is the goal – DoorGuard™ delivers with 99% accuracy.

Shown Below: Infinity displays DoorGuard’s point-cloud which identifies people and objects from above. Decisions are made within these programmable zones of interest. This is one of the many screens for DoorGuard which displays inputs, outputs, occupancy counts, power draw/consumption, the point cloud visual, and remote diagnostics. Or, the Infinity™ RESTful API can push data to other software platforms.

[Please click here for the video](#)





Product Specifications

Input Voltage	24 Volts
Power Draw	35 Watts Nominal/70 Watts Peak
Current Draw	1.45A
Power Consumption	0.035 kWh
Operating Temperature	Control Box: (-40C - 75C) (-40F - 167F) Sensor: (-20C - 60C) (-4F - 140F)

*A maximum of 3 DoorGuard™ systems per 250W 10A 24vDC power supply.

**Power supplies are available from Orion but are not included with DoorGuard™.

Inputs

- 6 programmable inputs
- Fire alarm and emergency contact input
- Access control inputs
- Invalid card input
- Pushbutton controller inputs

Features

- Volume up and down buttons (1-20)
- Hardware reset capability
- Voltage monitoring
- Amperage monitoring
- On-board hardwired modes and functions
- Programmable via USB flash drive
- Built-in dry contact fire alarm response
- Anti-dimming regulator for LEDs
- Galvanically isolated RS-485 serial communication ports
- Reverse power polarity protection on power inputs

Outputs

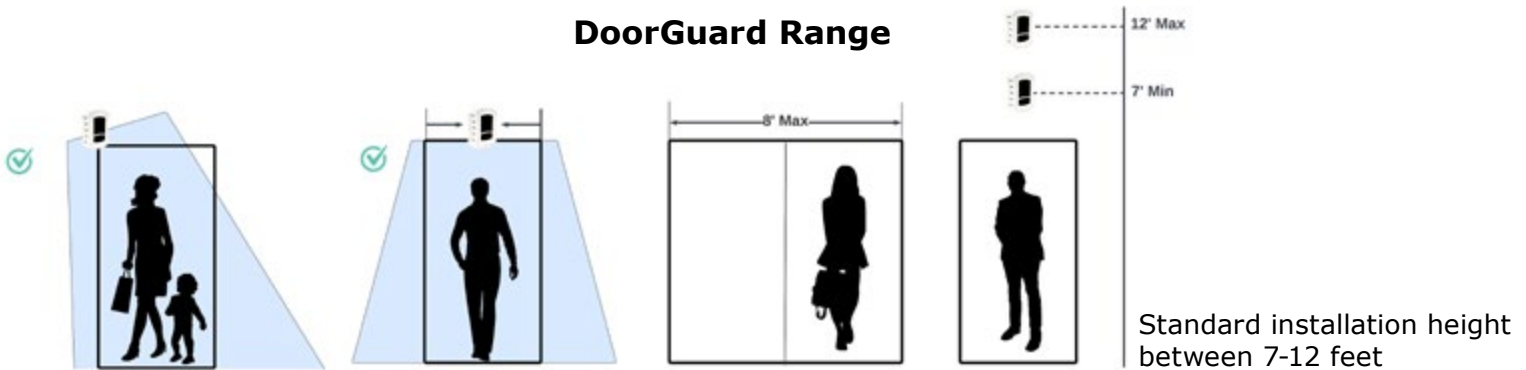
- 14 settable relay outputs
- 24VDC aux power and data output
- LED lighting and indicator outputs
- 8-ohm speaker output

Modes and Functions

- Free enter: No access control required to enter
- Free exit: No access control required to exit
- Close mode: No access control accepted
- Disable security mode: No access control required and no alarms reported
- Enter only: No exit access control required
- Exit only: No entry access control required
- No acknowledge: Mute access control tone
- Grant enter: Grant entry credit
- Grant exit: Grant exit credit
- Visitor enter: Secondary grant entry credit
- Visitor exit: Secondary grant exit credit

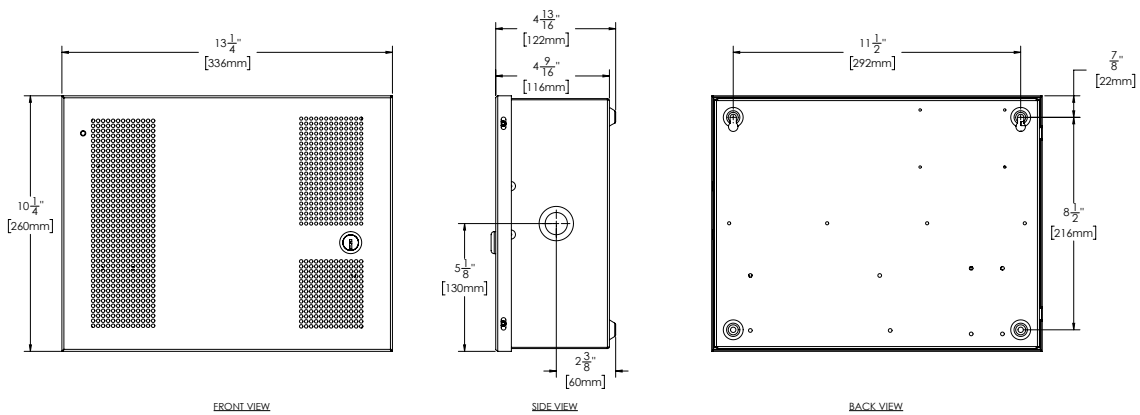


DoorGuard Range



Dimensions

Control Box



Sensor on Mount

