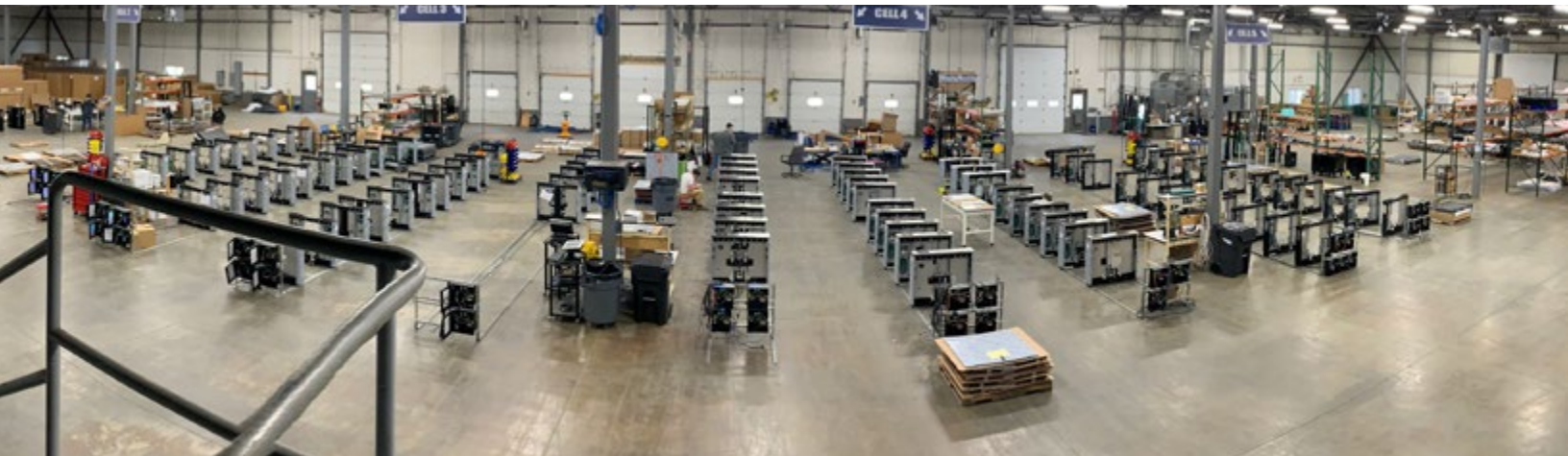




603.527.4187 · [sales@orioneci.com](mailto:sales@orioneci.com) · [orioneci.com](http://orioneci.com)



Understanding the wants and needs of your business to deliver a positive impact.  
Orion develops technologies that empowers your business.  
Orion strive to deliver exceptional customer experience.  
Exceeding your expectations of entrance control before, during and after the sale.



IRLC-SW

[Learn more here](#)  
[infinity-software and Software and Hardware Requirements](#)

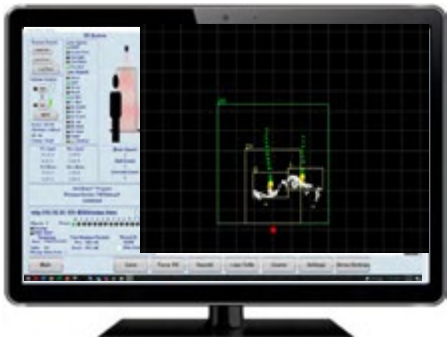
Infinity was developed to help our users better manage the complexities of the entrance control in ways that reflect the ever-changing realities of the ever-evolving security challenge.

- Data / Metrics can be configured and monitored
- Remote Lane Control with changes on the fly
- Inputs and Outputs with custom configurations
  - Diagnostic Tools for maximum up-time
- Sounds associated with alarms can be customized for superior alarm recognition
- Accurate people counts help keep people safe

Infinity provides unmatched flexibility and capability across our entire suite of entrance solutions.



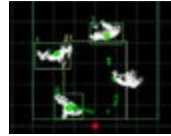
Complete command  
and control from a  
single pane of glass -  
What do **you** need  
infinity to do?



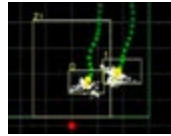


[Learn more here  
doorguard](#)

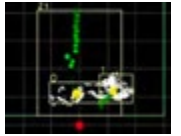
Multiple Users



Shoulder to Shoulder



Bi-Directional



DoorGuard is the world’s most accurate and intelligent Tailgate Detection System.  
Powered by the Nebula AI, it can be taught new patterns to increase its capability!

- \* Solid-State LiDAR
- \* Overhead Sensing Position
- \* Multi-Directional Detection and Counting
- \* US Patent #US 11,495,070 B2

Orion developed DoorGuard to recognize human behavior at entry locations and to eliminate false alarms. Integrates to any access control system via dry contact relays or Orion’s Infinity RESTful API.



Nebula AI Control Box

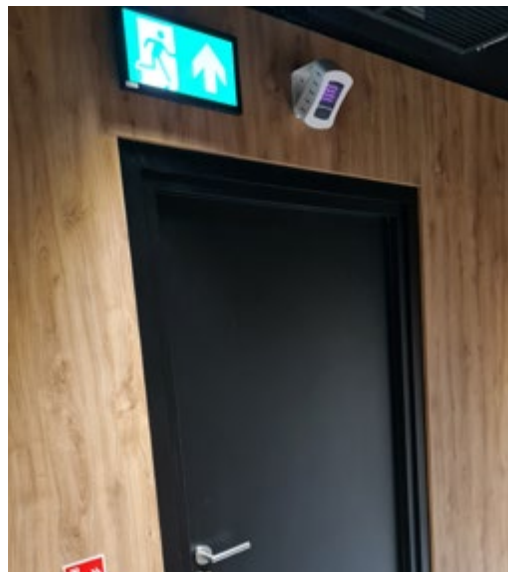


Orion Power Supply is optional

LiDAR Sensor



Exterior Mount Option

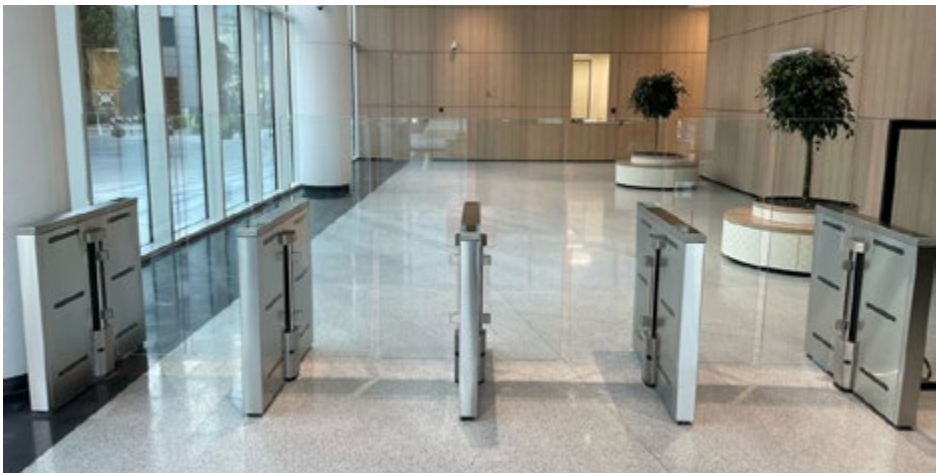




[Learn more here thinline/swing-glass-speedgates/#tmsg](https://www.orionentrancecontrol.com/thinline/swing-glass-speedgates/#tmsg)

Thinline  
Model: TL

Pedestal Width: 4"  
Lane Width: Standard 28"/ADA 36"  
Pedestal Length w/Flat End  
Pedestal Length w/Round End: 45"  
Glass Height: 38.5" to 72"  
Clear Opening 28 to 36"



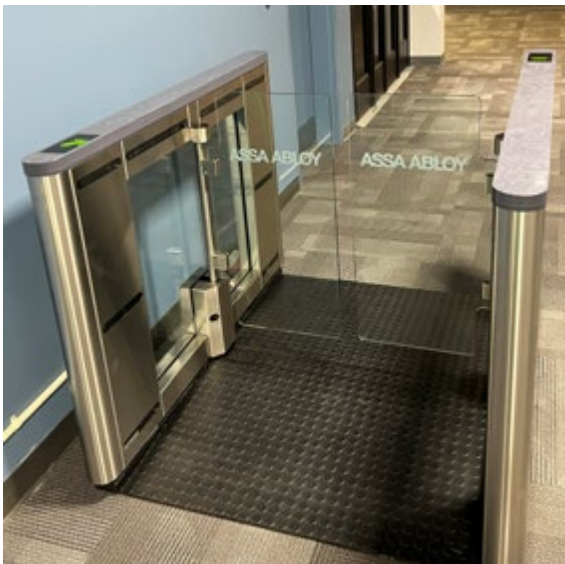
Thinline-Compact  
Model: TL-C

Pedestal Width: 4"  
Lane Width: Standard 28"/ADA: 36"  
Pedestal Length w/Flat End: 36"  
Pedestal Length w/Round End: 39"  
Glass Height: 38.5" to 72"



Thinline Clearview  
Model: TL-CV

Pedestal Width: 4"  
Lane Width: Standard 28"/ADA 36"  
Pedestal Length w/Flat Ends  
Pedestal Length w/Round Ends: 55"  
Glass Height: 38.5" to 72"



Thinline-Clearview-Extended  
Model: TL-CV-E

Pedestal Width: 4"  
Lane Width: Standard 36"/ADA 36"  
Pedestal Length w/Flat Ends and  
w/Round Ends: 67"  
Glass Height: 38.5" to 72"



Optical Barrier Swing Glass-Low Glass  
Model: OBSG-LG



Pedestal Width: 7"  
Lane Width: Standard 28"/ADA 36"  
Pedestal Length w/Flat Ends: 42.5"  
Pedestal Length w/Round Ends: 45"

Optical Barrier Swing Glass Low  
Glass-Compact  
Model: OBSG-LG-C



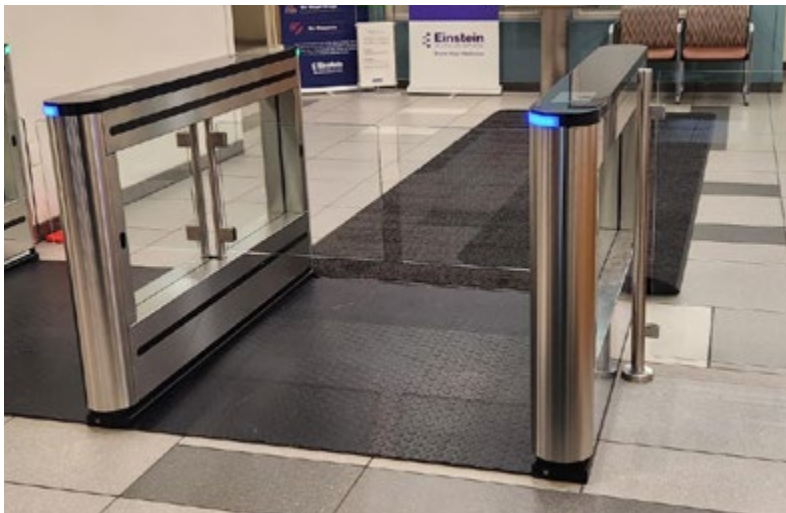
Pedestal Width: 7"  
Lane Width: Standard 28"/ADA 36"  
Pedestal Length w/Flat Ends: 36"

Optical Barrier Swing Glass Low  
Glass-Clearview  
Model: OBSG-LG-CV



Pedestal Width: 7"  
Lane Width: Standard 28"/ADA 36"  
Pedestal Length w/Flat Ends: 48"  
Pedestal Length w/Round Ends: 49"

Optical Barrier Swing Glass  
Low Glass-Clearview-Extended  
Model: OBSG-LG-CV-E



Pedestal Width: 7"  
Lane Width: From 28" up to 48"  
Pedestal Length w/Flat Ends: 60.75"  
Pedestal Length w/Round Ends: 60.75"





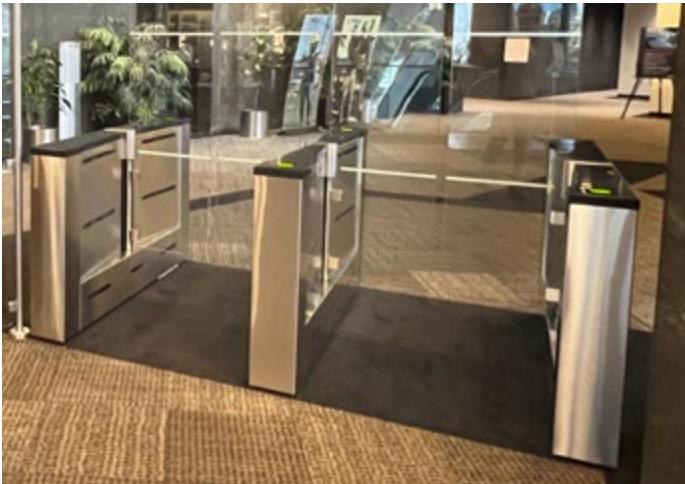
Optical Barrier Swing Glass-High Glass  
Model: OBSG-HG

Pedestal Width: 7"  
Lane Width: Standard 28"/ADA 36"  
Pedestal Length w/Flat Ends: 42.5"  
Pedestal Length w/Round Ends: 45"



Optical Barrier Swing Glass High Glass-Extended  
Model: OBSG-HG-E

Pedestal Width: 8"  
Lane Width: From 48"up to 48"  
Pedestal Length w/Flat Ends: 54"  
Pedestal Length w/Round Ends: 58"



Optical Barrier Swing Glass High Glass-Clearview  
Model: OBSG-HG-CV

Pedestal Width: 7"  
Lane Width: Standard 28"/ADA 36"  
Pedestal Length w/Flat Ends: 48"  
Pedestal Length w/Round Ends: 49"



Glass Barrier heights up to 72"  
Dip-tech digital printing on glass as a visual reminder of a clear barrier.



All products operate using 24VDC via an external power supply connected to a 120V, 15A dedicated circuit.  
All products shown can have round or square ends.



[Learn more here](#)  
[retractable-barrier-speedgates](#)

Optical Bi-Parting Full Glass

Optical Bi-Parting Full Glass-standard Model: OBFG-ST	Optical Bi-Parting Full Glass ADA Model: OBFG-ADA
Pedestal Width: Standard 13"	Pedestal Width: ADA 21"
Lane Width: Standard 22"	Lane Width: ADA 36"
Pedestal Length w/Round Ends: Standard 52"	Pedestal Length w/Round Ends: ADA 52"



Optical Bi-Parting Full Glass-Extended

Optical Bi-Parting Full Glass-Extended Model: OBFG-E-ST	Optical Bi-Parting Full Glass-Extended ADA Model: OBFG-E-ADA
Pedestal Width: Standard 13"	Pedestal Width: ADA 21"
Lane Width :Standard 22"	Lane Width: ADA 36"
Pedestal Length w/Round Ends: Standard 74.5"	Pedestal Length w/Round Ends: ADA 74.5"



All products shown can have round or square ends and are available in a wide variety of architectural finishes.

[Learn more here](#)  
[arm-barrier-speedgates/#sasg](#)

Optical Drop Arm Barrier Model: ODAB

Pedestal Width: Standard and ADA 6.5"
Lane Width: Standard 28"/ ADA 36"
Pedestal Length w/Flat Ends and w/Round Ends: 36"





Optical Swing Arm Barrier-Single Arm  
Model: OSAB-SA

Pedestal Width: Standard and ADA 7"  
Lane Width: Standard 28"/ ADA 36"  
Pedestal Length w/Flat Ends: 42.5"  
Pedestal Length w/Round Ends: 45"



Optical Swing Arm Barrier-Double Arm  
Model: OSAB-DA

Pedestal Width: Standard and ADA 7"  
Lane Width: Standard 28"/ ADA 36"  
Pedestal Length w/Flat Ends: 42.5"  
Pedestal Length w/Round Ends: 45"



Pure Optical No Barrier Clear View Compact  
Model: PONB-CV-C

Pedestal Width: Standard and ADA  
Lane Width: Standard 28" / ADA 36"  
Pedestal Length w/Flat Ends and w/Round  
Ends: 36"



[Learn more here pure optical no barrier](#)



Orion Pedestrian Swing Gate  
Model: OPSG  
Pedestal Width: 6.25"  
Passage Width: Standard 36"  
Pedestal Height: 38"

[Learn more here accessories](#)



Orion Lane Mounting  
Platform  
Model: OLMP  
Pricing upon request



Post and Glass-Standard  
Model: OPAG-ST  
  
Post and Glass-Highglass  
Model: OPAG-HG

Priced per project

Orion's post and glass panels are used to secure areas or direct traffic in your entrance control configuration in areas where turnstiles are not needed. These permanent barriers are made of clear, tempered glass and are 3/8 inch thick.

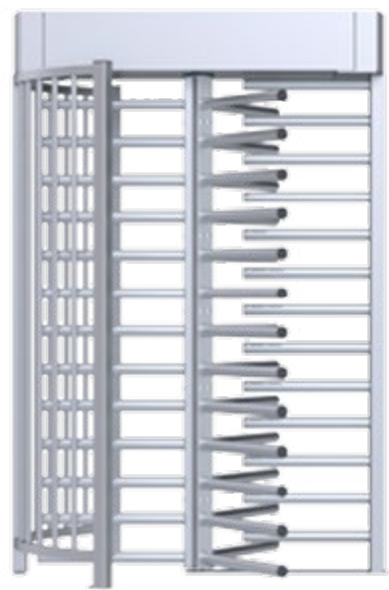
The Orion Lane Mounting Platform allows for the installation of turnstiles without the need of cutting or drilling into existing floors.



Full Height Mechanical-MR-T 670  
Clear opening 26.3" (670mm)

Rotor: 3 sectional (120°) and 13 horizontal  
arms 2" diameter in each section  
Complete Height: Standard 93.31"  
Complete Width: 62.28"

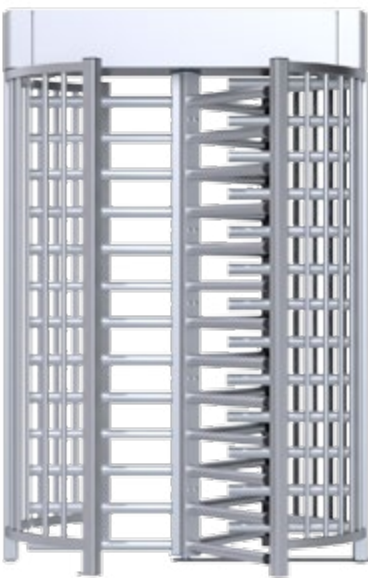
F-1001	Hot Dipped Galvanized Steel
F-1002	Powder Coated over Hot Dipped Galvanized Steel
F-1003	AISI 304 Stainless Steel
F-1004	AISI 316 Stainless Steel
F-1006	AISI 304 Stainless Steel Rotor and Powder Coated over Hot Dipped Galvanized Steel Frame



Full Height Mechanical-MR-T 671  
Clear opening 26.3" (670mm)

Rotor: 3 sectional (120°) and 13 horizontal arms  
2" diameter in each section  
Complete Height: Standard 93.31"  
Complete Width: 62.28"

F-1043	Hot Dipped Galvanized Steel
F-1044	Powder Coated over Hot Dipped Galvanized Steel
F-1045	AISI 304 Stainless Steel
F-1046	AISI 316 Stainless Steel
F-1048	AISI 304 Stainless Steel Rotor and Powder Coated over Hot Dipped Galvanized Steel Frame



Full Height Tandem-MR-T 672  
Clear opening 26.3" (670mm)

Rotor: 2 sectional (120°) and 13 horizontal arms  
2" diameter in each section  
Complete Height: Standard 93.31"  
Complete Width: 95.59"

F-1085	Hot Dipped Galvanized Steel
F-1086	Powder Coated over Hot Dipped Galvanized Steel
F-1087	AISI 304 Stainless Steel
F-1088	AISI 316 Stainless Steel
F-1090	AISI 304 Stainless Steel Rotor and Powder Coated over Hot Dipped Galvanized Steel Frame





[Learn more here](#)  
[full-height-mechanical](#)

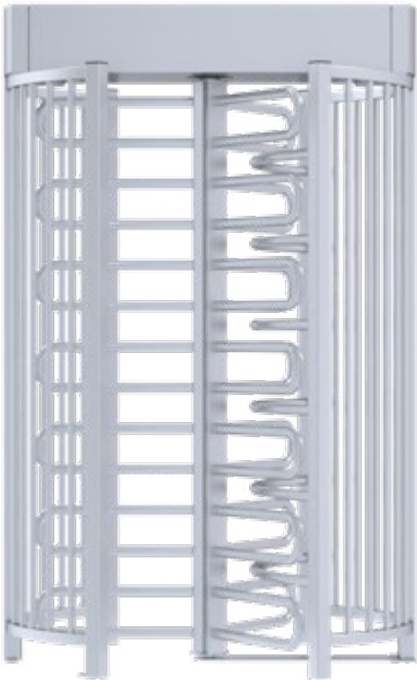
Full Height Mechanical MR-T 672A  
Model: MR-T 672A Clear Acrylic Arms

Rotor: 3 sectional (120°) and 10 with acrylic/polycarbonate arms and side panels  
Complete Height: Standard 93.31"  
Complete Width: 95.59"  
Clear opening 26.3" (670mm)



Full Height Mechanical-MR-T 673  
Model: MR-T 673 "Trombone" Arms

Rotor: 3 sectional (120°) and 14 horizontal arms 2" diameter in each section  
Complete Height: Standard 93.31"  
Complete Width: 62.24"  
Clear opening 26.3" (670mm)



Hot Dipped Galvanized Steel
Powder Coated over Hot Dipped Galvanized Steel
AISI 304 Stainless Steel
AISI 316 Stainless Steel
AISI 304 Stainless Steel Rotor and Powder Coated over Hot Dipped Galvanized Steel Frame



[Learn more here](#)  
[full-height-mechanical](#)



**Full Height Automatic Bi-directional Gate-MS 102**  
Model: MS 102

F-1521	Hot Dipped Galvanized Steel
F-1522	Powder Coated over Hot Dipped Galvanized Steel
F-1523	AISI 304 Stainless Steel
F-1524	AISI 316 Stainless Steel
F-1526	AISI 304 Stainless Steel Rotor and Powder Coated over Hot Dipped Galvanized Steel Frame

Rotor: Motorized bi-directional rotor with 13 horizontal arms in a 2" diameter  
Complete Height: 93.31"  
Complete Width: 59.06"  
Clear opening 41.1" (1044mm)



**Double Wide Full Height Automatic Bi-directional Gate-MS 182**  
Model: MS 182

F-1528	Hot Dipped Galvanized Steel
F-1529	Powder Coated over Hot Dipped Galvanized Steel
F-1530	AISI 304 Stainless Steel
F-1531	AISI 316 Stainless Steel
F-1533	AISI 304 Stainless Steel Rotor and Powder Coated over Hot Dipped Galvanized Steel Frame

Rotor: Bi-directional rotors with 13 horizontal arms in 2" diameter.  
Complete Height: 93.31"  
Complete Width: 92.2"  
Clear opening 72.8" (1850mm)

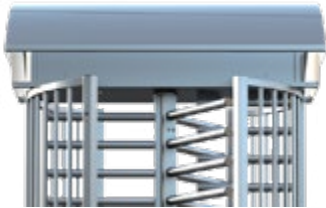


**ADA Full Height Mechanical Bidirectional Gate MD 100**  
Model: MD 100

F-1535	Hot Dipped Galvanized Steel
F-1536	Powder Coated over Hot Dipped Galvanized Steel
F-1537	AISI 304 Stainless Steel
F-1538	AISI 316 Stainless Steel
F-1540	AISI 304 Stainless Steel Rotor and Powder Coated over Hot Dipped Galvanized Steel Frame
MD-100M	Pushbar exit device and closer, mesh infill
MD-100E	Pushbar exit device, closer and electrical strike and mesh infill

Complete Height: 93.31"  
Complete Width: 47.8"  
Clear opening 39.3" (1000mm)  
Special order passage width: 47.2" (1200mm) 55.1" (1400mm)

Full height manual operated security gates can be installed and operated individually or in conjunction with full height turnstiles. Right or left handed swing directions can be chosen.



Full Height canopy  
Price starting at



Full Height roof with  
water outlet  
Price starting at

Call for pricing [603.527.4187](tel:603.527.4187) or email us at [sales@orioneci.com](mailto:sales@orioneci.com)







Durapod DT 100-ST

Model: DT 100-ST

T-1001	Electromechanical Tripod Turnstile - AISI 304
T-1002	Electromechanical Tripod Turnstile - Drop Arm - AISI 304
T-1004	Motor-driven Tripod Turnstile - Drop Arm - AISI 304

Passage Width: 22"  
Arm Length: 20"  
Cabinet Size (WxLxH): 9.84"x 41.33"x 39.37"  
If configured the arms drop down with power loss



Durapod DT 200-BG

Model: DT 200-BG

T-1022	Electromechanical Tripod Turnstile - AISI 304
T-1023	Electromechanical Tripod Turnstile - Drop Arm - AISI 304
T-1025	Motor-driven Tripod Turnstile - Drop Arm - AISI 304

Passage Width: 22"  
Arm Length: 20"  
Cabinet Size (WxLxH): 9.84"x 47.24"x 39.84"  
If configured the arms drop down with power loss



Durapod DT 500

Model: DT 500

T-1050	Electromechanical Tripod Turnstile - AISI 304
T-1051	Electromechanical Tripod Turnstile - Drop Arm - AISI 304
T-1053	Motor-driven Tripod Turnstile - Drop Arm - AISI 304

Passage Width: 22"  
Arm Length: 20"  
Cabinet Size (WxLxH): 11.81"x17.71"x40.55"  
If configured the arms drop down with power loss



Mechanical Swing Gate SGM 100

Model: SGM 100

WS 1 GT-5010-000	Mono directional manual mechanical swing gate without lock.
WS 2 GT-5011-000	Bi-directional manual mechanical swing gate without lock.
WL 1 GT-5012-000	Mono directional manual mechanical swing gate with keylock.
WL 2 GT-5013-000	Bi-directional manual mechanical swing gate with keylock.
WE 1 GT-5014-000	Mono directional manual mechanical swing gate with electric lock.
WE 2 GT-5015-000	Bi-directional manual mechanical swing gate with electric lock.

Passage Width: max 36"  
Barrier Wing Length: max 35.43"  
Post Height: 39"  
Post Diameter: 4"

