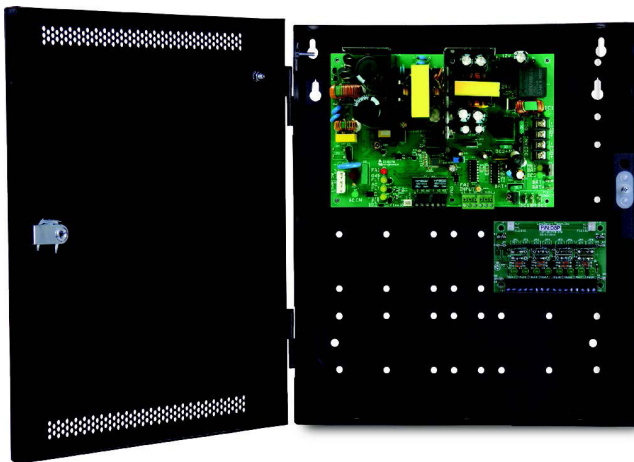


OTPS

Orion Turnstile Power Supply



250W Power Supply/Charger
20A/12V or 10A/24V
8 Class 2 Power Limited Outputs
14" x 12" 4.5 Locking Enclosure

ELECTRICAL RATINGS

Parameter		Unit
Input Voltage	120/230	VAC
Input Power (max)	282	Watts
Output Voltage	12 or 24	VDC
Output Current	12 or 10	Amps
Battery Charge Capacity	80	Ah
Efficiency	88	%
Output Ripple	120	mVp-p
Line Regulation	0.1	±%
Load Regulation	2	±%
BTU Rating	109	BTU/Hr
Continuous Power Outputs	8	
Switched Power Outputs	8	
Output Class II Rating	2.5	Amps
Fire Alarm Interface	Yes	

DESCRIPTION

The Orion Turnstile Power Supply is an off-line switch-mode power supply-battery charger system specifically designed for multi-output general purpose power distribution, that may be used to provide distributed power for access, fire and the CCTV segments of the life safety industry.

Providing for system power and multiple auxiliary power distribution outputs, the unit is user selectable for 12 or 24VDC and is configured in a painted, steel, locking enclosure and integral battery space.

Each auxiliary output is class II power limited at 2.5A each and programmable for continuous power output or switched (resettable) voltage output.

Complete fault detection and reporting, with programmable fault delays, is provided along with data-logging capability of fault occurrence, battery usage time and current power supply status.

FEATURES

- Fully modular power management system
- Multiple outputs for system power, direct lock control and accessory power distribution modules
- Each distributed output is selectable for either continuous or switched DC in single voltage systems, or 12/24VDC in dual voltage systems
- Fire alarm interface for egress lock control (FAI)
- Configurable fail-safe / fail-secure modes of operation
- Comprehensive fault detection and reporting including optional earth ground and battery presence
- AC and System fault output relays can be delayed via PowerCom
- Microprocessor dual rate charging restores battery sets from 4 to 80Ah

Orion Entrance Control, Inc.



PRODUCT

Data Sheet

OTPS

Orion Turnstile Power Supply

STANDARD FEATURES

SureCharge The microprocessor controlled charging process used by the FlexPower power supply guarantees both proper charging current for the battery and fastest charge time. The constant current charger provides a linear, predictable charge time for any lead acid, gel battery set from 4 to 80 amp-hours (based on charger rating) without stress or damage to the battery.

VSelect One single switch for configuring the output between 12 and 24VDC eliminates field errors and allows for the reduction and simplification of service inventory by eliminating the necessity of stocking units in each voltage.

TruWatt Output power capability of the power supply remains constant regardless of the output voltage setting.

FlexConnect Provides a prewired interconnection system between the power supply and accessory boards of the power system that introduces the concept of a dual voltage bus structure throughout all system modules and eliminates intermodule wiring by the field installer.

Reliability+ All power supplies are fully fault protected and feature fiberglass printed circuit boards rather than paper-based to protect the electronics from water and other corrosive elements found in industrial settings. High efficiency power supply design promotes low heat generation leading to a longer service life.

GreenSmart All members of the FlexPower family are RoHs compliant, lead-free, and meet the latest state, federal and European requirements for energy efficiency.

FAULT DETECTION AND REPORTING

The comprehensive fault detection and reporting mechanism of the FPO series provides for both local and remote fault reporting.

On-board visual indicators are provided to give immediate installer feedback. Independent form C relay contacts are provided to report AC and system fault conditions to remote or auxiliary equipment. A door tamper switch is included.

The drawing and picture presented is illustrative only. Orion Entrance Control, Inc. reserves the right to change product specifications without prior notice. Not responsible for typographical errors.

Detected Fault Conditions:

- AC Power
 - AC loss, AC low
- DC Power and System
 - Abnormal or loss of power supply operation
 - Over current, over temperature condition
 - DC output high, low
 - Battery Presence, Earth Ground (user optional)
 - Reversed battery condition, blown fuse or loss of output voltage on selected accessory boards (detected on the power supply)

FIRE ALARM INTERFACE (FAI)

- Activation Methods
 - DC voltage: 9 to 33VDC, 3 to 15mA
 - Dry contact NO/NC
- Latch Enable: NC contact set or switch (typically for Canadian use)

POWER DISTRIBUTION MODULE (D8P)

- Eight power distribution outputs, individually programmable to either continuous or FAI switched mode (resettable) with the switched mode programmable to either failsafe or failsecure by the host power supply
 - **D8P** 2.5A class 2, power limited per output
- DC Presence: Green LED per output
- Removable terminals: accepts #14 to #24 AWG

AGENCY LISTINGS

USA

UL 294
UL 603
UL 1076
FCC Part 15, Subpart B
CSFM Approved

CANADA

ULC S318
ULC S319
CSA C22.2 #107.1
CSA 22.2 #60950

Model Number	OE250-D8PE1
Origin Part #	102596 Includes 2 12v batteries
Orion Part #	103359 Does not include batteries
LifeSafety Model #	FPO250-D8PE1
Type	Power Limited
Mechanical Info	Size: 14" x 12" x 4.5" Weight: 10 lb.